

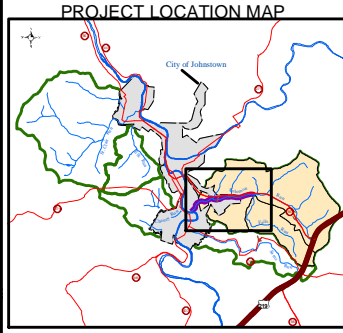
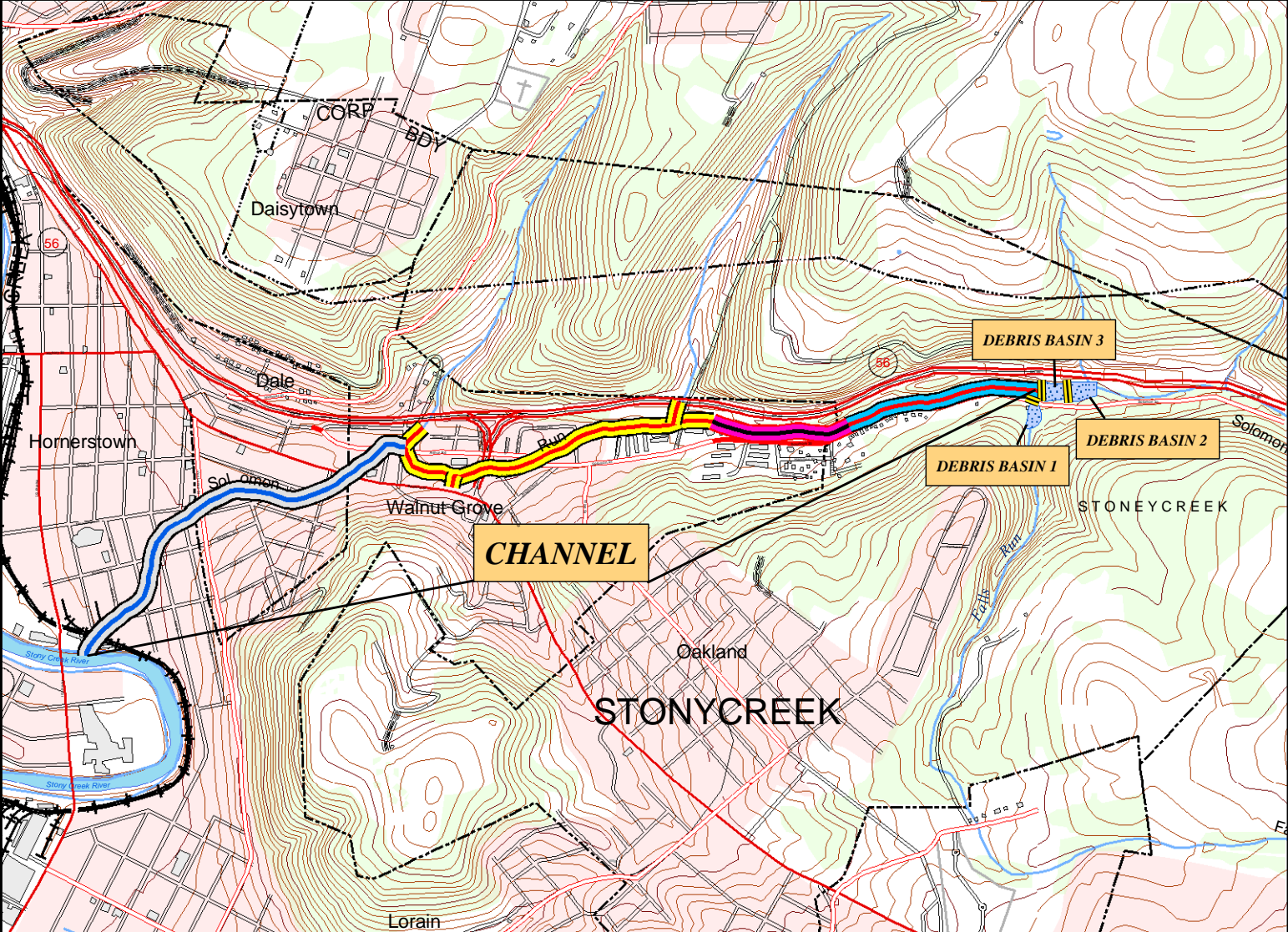


PROJECT:
 City of Johnstown
 Flood Protection Projects
 Solomon Run
 Flood Protection Project
 DGS 184-4

TITLE:
 Project Features Map

- LEGEND:
-  Grouted Side Sloped Channel
 -  Concrete Trapezoidal Channel
 -  20-ft Rectangular Channel
 -  25-ft Rectangular Channel
 -  Concrete Weir
 -  Debris Basin



PREPARED FOR:
 Johnstown Redevelopment Authority

DRAWN BY:	MWL	8/22/03	FILE PATH: F:\GIS\2002\02-2797_01\DS
CHECKED BY:	RMW	8/22/03	DESCRIPTION: Project Features
APPROVED BY:	JRA	10/10/03	SHEET SIZE: 8.5 x 11

